

By combining Powr-Grip's Vacuum Cup with a compressed air supply, this product provides a better way to handle glass manually on production lines. The N4950AIR Vacuum Cup attaches quickly without any pumping, and it never needs to be repumped during operation.

## FEATURES:

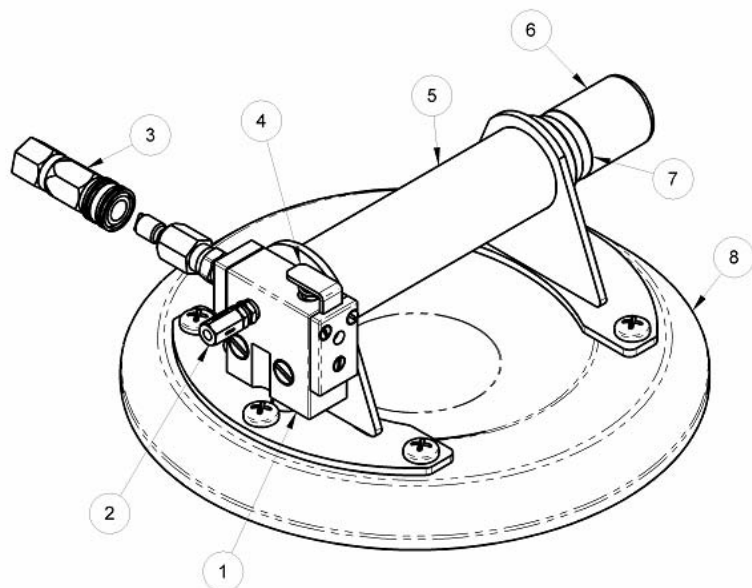
- Uses continuous vacuum supply to pick and place loads.
- Durable metal handle.
- Fast attachment on smooth, nonporous flat surfaces.
- Red-line vacuum indicator shows when vacuum cup is ready to lift load.
- No repumping required.
- Release mechanism permits quick and complete release.
- Supplied with protective carrying case.

## SPECIFICATIONS:

- Vacuum Pad: Flat, 8" [204 mm] diameter (model G0695)
- Load Capacity: 125 lbs [57 kg] per vacuum cup
- Standard Operating Power: Compressed air, 2 SCFM [57 liters/minute] @ 75 psi [517 kPa]



With the capacity for nearly any manual lift, Wood's Powr-Grip<sup>®</sup> hand-held vacuum cups are rugged and dependable.



1. Venturi Block
2. Check Valve
3. Quick Connect Coupler
4. Release Mechanism
5. Handle
6. Plunger
7. Red-Line Vacuum Indicator
8. Vacuum Pad

Based on product information at time of publication.

