

**LJ6VH  
Vertical Handle Hand Cup  
Guide to  
Troubleshooting and Repair**



**Troubleshooting Guide**

For general maintenance, inspecting and testing procedures, please refer to Troubleshooter Guides for the N4000 ABS Handle, N4950, N5450, N6450 Metal Handle or 3", 3x6", 4½" and 6" Vacuum Cups.

PROBLEM	CAUSE	CORRECTION
<b>Slow leakage</b>	Cuts on sealing edge	Replace vacuum pad.
	Dirt or lint inside handle	Wipe inside of handle with a soft cloth. Check for contamination on U-cup or button.
	Dry pump	Apply a light coating of silicone lubricant inside handle.
	Contaminated pad face	Clean vacuum pad.
<b>Severe leakage</b>	Severe contamination	Clean plunger assembly and inside of handle.
	Gouges or cuts on sealing edge	Replace vacuum pad.
<b>Jammed or sluggish pump</b>	Dented handle	Replace handle.
	Bent plunger	Replace plunger assembly.
	Severe contamination	Clean plunger assembly and inside of handle.
	Obstructed valve inlet	Remove obstruction from suction inlet (behind air filter) or from space between handle and pad.
<b>Pad slips when attached</b>	Contaminated load surface	Wipe surface clean. If necessary, wash and allow to dry.
	Contaminated pad face	Clean vacuum pad.
<b>More than 10 strokes needed to apply</b>	Any of the above	Perform general maintenance.
	Dirt or lubricant on check valve	Remove, clean and reinstall plunger assembly, retainer and check valve as directed in Disassembly and Assembly sections.

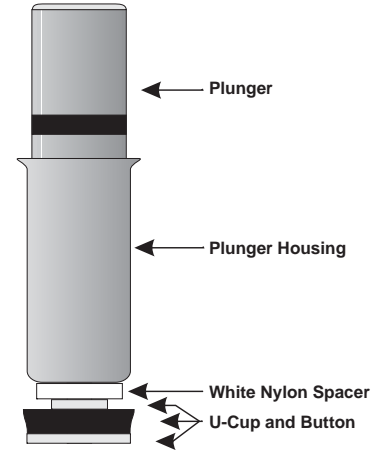
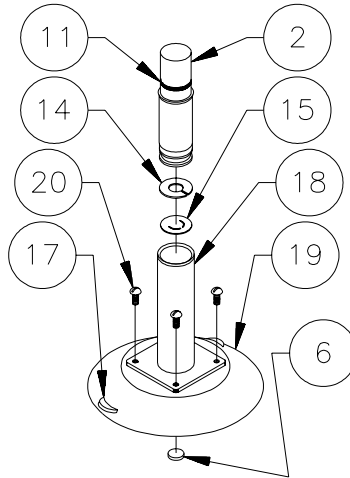


# Parts and Assembly

2	90520	Metal Plunger Assembly
6	60024	Air Filter
11		Red Line
14	61151	Check Valve Retainer
15	51100	Check Valve
17		Release Tab
18	90115	Vertical Handle
19	49416T	LJ6 Vacuum Pad
20	10006	Screws, 10-32 x 5/16"

## Not Shown

29312	Pad Cover - 6"
28504	Silicone Lubricant



# Disassembly Procedures

## Remove Plunger Assembly from Handle

Grasp the head of the plunger assembly and pull it straight out from the handle. If the plunger assembly is too tight to be removed this way, it is best to return the cup to the factory for repair. Replace the plunger assembly if the plunger housing is bent or dented. Otherwise, be careful to keep the plunger assembly clean and free from contaminants. It is advisable to cover the plunger assembly with a clean, lint-free towel when it is not in the handle. Disassembly of the plunger assembly is not recommended.

## Remove Handle from Vacuum Pad

Remove the 6 handle screws, and separate the handle from the pad. Wipe off the exposed surfaces of both the handle and the pad, to ensure a good seal during reassembly. Make sure the pad's sealing ring and suction inlet are clean, dry and free of contaminants.

## Remove Retainer and Check Valve from Handle

Being careful not to scratch the inside of the handle, remove the retainer and check valve using a hooked scribe or similar tool. With a soft, lint-free cloth, carefully clean these parts, as well as the plunger assembly, paying particular attention to the U-cup and button. Wrap a small dowel or rod with a soft, lint-free cloth and gently wipe the inside of the handle, to make sure it is clean and dry (lubricant-free).

# Assembly Procedures

## Inspect Handle and Reinstall Check Valve and Retainer

Carefully examine the inside of the handle for scratches and contaminants, using a flashlight for illumination. Scratches between the mid-point and the closed end of the handle can cause leakage. Scratches near the open end of the handle rarely present a problem. Make sure that no lubricant remains inside the handle. Drop the check valve inside the handle so that it lays flat against the closed end. Using a dowel or other tool that will not scratch the sides of the handle, push the retainer all the way into the handle to hold the check valve securely in place.

## Attach Handle to Vacuum Pad

Place the handle on the pad, align the screw holes and reinstall the handle screws.

## Reinsert Plunger Assembly into Handle

Using a soft swab, apply a ring of lubricant around the inside of the handle, at a point about 1" [25 mm] from the closed end. Keep the open end of the handle as dry (lubricant-free) as possible. Silicone lubricant is recommended and available in appropriate quantities by contacting Wood's Powr-Grip Customer Service. **Do not use improper lubricants in the handle.**

While making certain the button, check valve and retainer remain free of lubricant, insert the U-cup end of the plunger assembly into the handle. Push the plunger assembly until it begins to tighten; then seat the plunger assembly with one strong, swift motion. Operate the plunger to spread the lubricant, thoroughly coating the outside of the U-cup by twisting the plunger as it moves. Now the cup is assembled and ready for testing.